



20 YEARS OF DEVELOPING AND MANAGING

Digitalisation Solutions

For More Efficient and Safer Operations

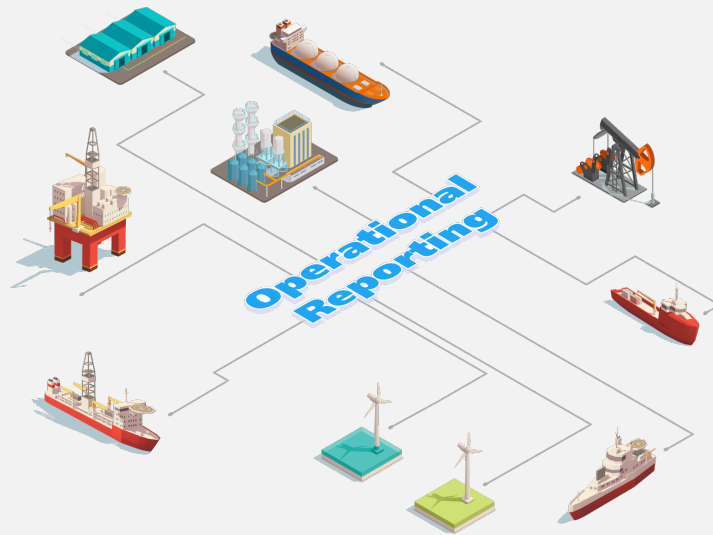
Agenda

- Lunch/Networking
- Welcome

Digital solution for more efficient operation – Presight Solutions

Reporting made easy

- Digital solution for safer operation
 - Picking up signals from the noise (Monitoring)
- Coffee Break/Networking
- Client Use Case
- Partners corner
 - Lloyds register
 - CGE
- Coffee Break/Networking
- Roadmap
- Summary/Q&A



07:00am: Engineering & Operation

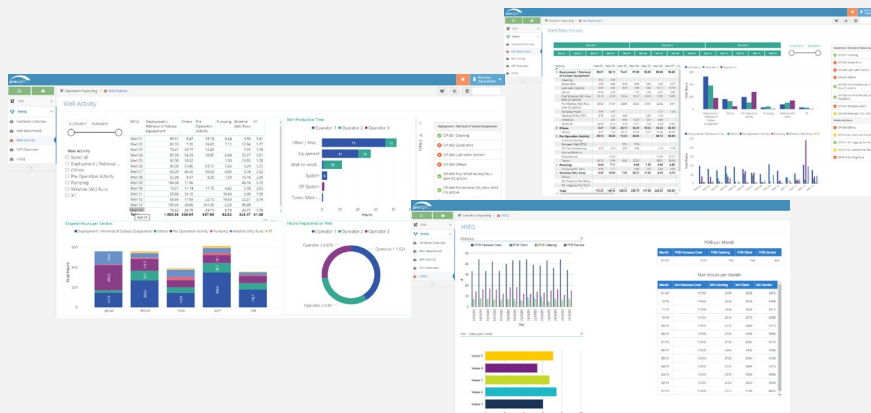
- Daily Operations Data Entry
- LWI or Drilling
- Operations Reporting
- Shift Handover & Completion Reporting

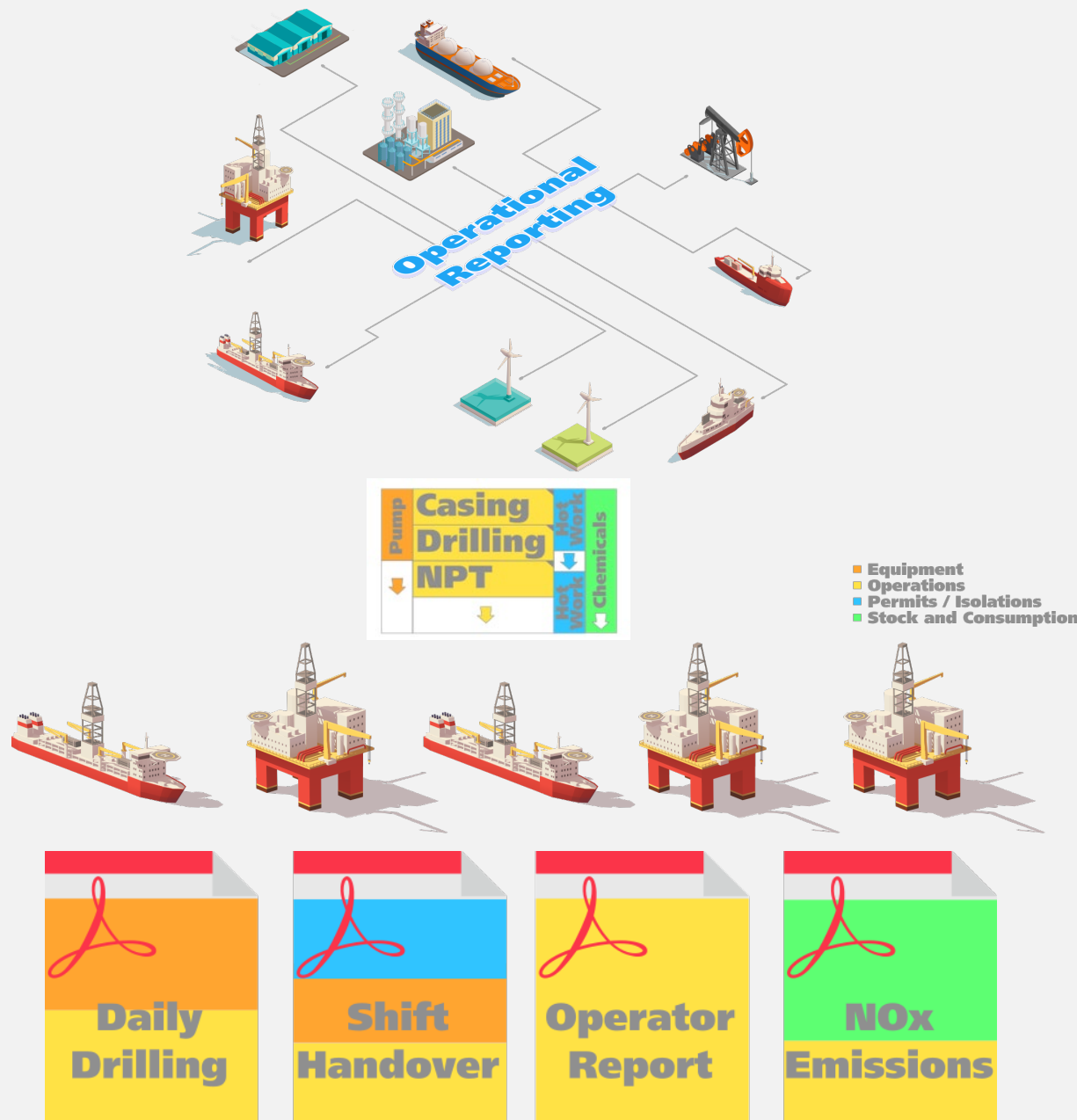
07:01am: Management

- NPT Analysis
- Multi Well Comparison
- Tour Performance
- KPI & HSE Analysis

07:02am: Operator & Partners

- Daily Activity Summary
- Well Performance
- Key Performance Data
- Automated Reporting

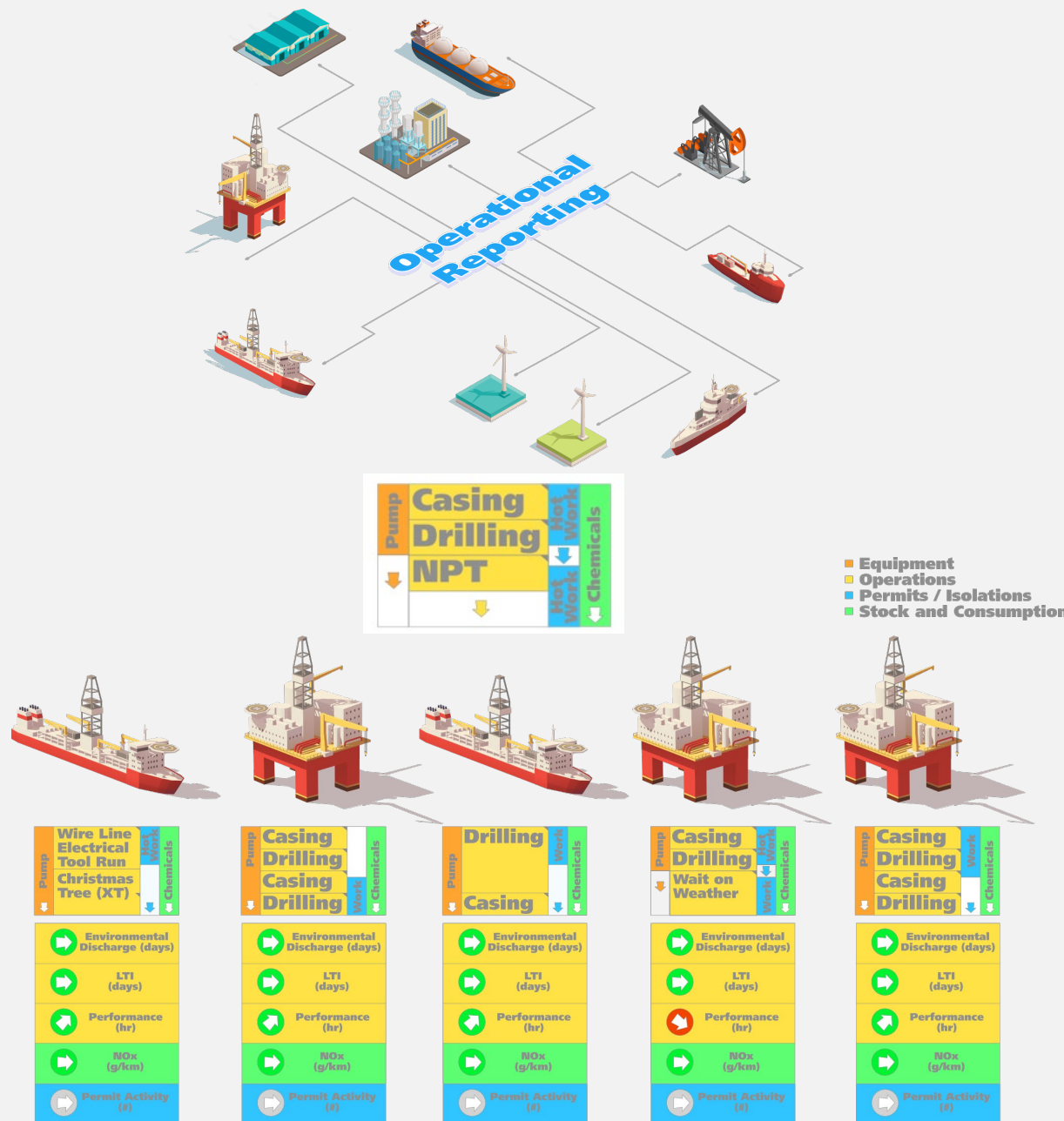




- Daily activity data entry
 - HSE data registration
 - Observations registration
- Main and Parallel Activities
- Resource consumption
- Crew & POB reporting
- Automated report distribution

Key Benefits

5



- Reduce Manhours
- Mitigate inaccuracies
- Ensure data quality
- Collect codified information into a structured & indexable database



Handheld Reporting



Rates and Discounts



Secondary Language



Custom fields filtered for activity



Performance for activity codes

Demo - Screenshots

DEV/TEST Environment

EO test Vessel - SESV

Installation: EO test Vessel - SESV
Operator: Amerada Hess Ltd.
Region: Brazil
Field: 1074R
Well: # 1-QG-5A-BAS

Home > Administration > Operation > Daily > Reporting Portal > Sign off

Logged in as DANA

Português

Daily Operation

- Operations 24h
- Parallel Activities
- Discounts
- Observations and Comments

Daily Marine

- Misc. Marine
- Boat Movement
- Helicopter Traffic
- Estimate

Installation - EO test Vessel - SESV

- Well - Amerada Hess Ltd., 1074R, #
- Phase
- Daily Operation, 2020-01-02
 - ROV Crew
 - Operations 24h - 09:00 -> 10
 - Parallel Activities
 - Discounts
 - Observations and Comments
- Daily Marine
 - Misc. Marine
 - Helicopter Traffic
 - Boat Movement
- Weekly - 51, 2016

DEV/TEST Environment

Operations 24h

Digitisation Plant

Installation: Digitisation Plant
Operator: BG China
Region: North Atlantic
Ocean: Algeiras - Norway
Operation: Operation(Well)

Home > Administration > Operation > Daily > Reporting Portal > Sign off

Logged in as DANA

Digitisation Plant, BG China, Algeiras - Norway, Operation(Well), 2017-12-06

Reverse sorting Edit all Insert a new record

#	From time	To time	Elapsed	Code	Rate	Additional Well ref.	Tag	Base type	Operation mode	Approved	NPT	Remarks	Remarks (Use text: Português)	Disputed
1	00:00	01:00	01:00	PTW	DR				SM					No

[Recount activity #] [Toggle Raw data]

Presight OR v4.8.2. Developed by Presight Solutions

Daily Marine

All text should be entered in English, if not otherwise specified.

Fantasea LWI

Installation: Fantasea LWI
Operator: Operator 1
Region: Europe
Field: Field 2
Well: Well 01

Home > Administration > Operation > Daily > Reporting Portal > Sign off

Logged in as KIRSTI

Insert a new record

Installation Fantasea LWI
Operator 1
Field 2
Well 01
Day 2020-01-01

Comments marine dept

Gitt en dynamisk klimafornektelse realiseres miljøbidraget innenfor rammen av fremtidsstrusselen. Gitt en tverrsektoriell klimadebatt tilpasses synergieffekten med basis i våre endelige mål.


	Consumed	Received	In Stock
Diesel	34	400	366
In well	4		
Inside 500m	10		
Outside 500m	20		
UREA		25	25
Oceanic HW 443 ND		20	20
100% MEG		10	10
Friction reducer		30	30
Pump		30	30
Brine (Sodium Chloride)			
Cleanrig HP			
Oxygen Scavenger OR-13		5	5
SolidClitic Cartridge 1.3			


Navigation summary from date - - Clear date (N/A)

Save and close Cancel

Presight OR v4.8.2. Developed by Presight Solutions

Demo - Screenshots

		Daily Operations Report				
Vessel	Fantasea LWI					
Date	2020/1/3					
Operator	Operator 1					
Field	Field 2					
Well	Well 01					
Water depth	173 m					
Stack heading		Last WDP Pressure test				
Template heading		Lats Weekly WCP Function test				
IW Optimal heading		Last Wireline Run #				
Managers						
Captain	Barry Charlton					
Chief Engineer	Aneurin Whitney					
Chief Officer	Nataniel Bentley					
Offshore Manager	Skylah Goodman					
Offshore Manager Night	Cain Holland					
WIS Day	Suhail Simmons					
WIS Night						
WOSL	Brittany Olsen					
POB						
Fantasea Crew	23					
Client	2					
Service	2					
Catering	2					
Total POB	29					
Operation next 24 hrs						
Vedrørende en inkluderende styringsinnsats realiseres brukerrepresentasjonen i relasjon til utfordringsrommet. Gitt en tverrsektoriell manøver fokuseres avskrekkingseffekten parallellt med kommandonivået.						
OM Comments regarding current operation						
I et brev datert 20. desember 2019 gjør SJ Norge statsråden oppmerksom på at Bane Nor har planlagt vedlikeholdsarbeid og buss for tog den helgen SJ starter opp trafikken i juni 2020.						



Fantasea LWI

Daily Operations Report

Charter	Time (min)	Service	Time (min)
Discount	0	Discount	0
Total chargeable time		Total chargeable time	
Total	0	Total	0

NPT per responsible part

Root cause	Remarks
------------	---------

Operation mode (min)

Rate	
------	--

Sailing (decimal time)				RSV	
Waiting on weather	In port	Waiting for the pilot	Unproductive sailing	Time spent working as a RSV	RSV and in port

Operational log

From	To	Mins	Phase	Code	Rate	Oper. mode	Remarks
------	----	------	-------	------	------	------------	---------

Operational log, parallel activities

Activity	From	To	Min	Phase	Code	Remarks
----------	------	----	-----	-------	------	---------

Discounts

From	To	Disc. mins.	Code	Responsible	Contract	Remark
------	----	-------------	------	-------------	----------	--------

HSEQ

	FSC	Client	SER	CAT
LTI	0	0	0	0
Restricted workcase	0	0	0	0
Medical treatment	0	0	0	0
First aid	0	0	0	0
Loss (quality issues)	0	0	0	0
Environmental	0	0	0	0
Observations	23	10	5	3
Risk assessments	0	0	0	0
Suggestions best practice/lessons learned	0	0	0	1
Non-conformance raised	0	0	0	0
Management of change	0	0	0	0
Familiarization with vessel	2	2	1	0
Safety alerts	0	0	0	0
Toolbox talk	2	0	0	0
Safety walk	3	2	3	0

Date last recordable injury	2018/5/7
Date last LTI	2019/5/16

Demo - Screenshots

Unit

Arena

Fantasea Overview

Well Benchmark

Well Activity

NPT Overview

HSEQ

Operation Reporting > Fantasea Overview

Fantasea Overview

Show Daily Report

Select date

☐ Tuesday 14. January 2020
☐ Monday 13. January 2020
☐ Sunday 12. January 2020
☐ Saturday 11. January 2020
☐ Friday 10. January 2020
☐ Thursday 9. January 2020
☐ Wednesday 8. January 2020
☐ Tuesday 7. January 2020
☐ Monday 6. January 2020
☐ Sunday 5. January 2020
☐ Saturday 4. January 2020

Contact information

Captain

Telephone: 73 73 62 37

E-mail: captain@fantasea.com

Chief Engineer

Telephone: 73 73 44 75

E-mail: chief.engineer@fantasea.com

Chief Officer

Telephone: 73 73 24 54

E-mail: chief.officer@fantasea.com

Offshore Manager

Telephone: 73 73 42 14

E-mail: om@fantasea.com

WIS

Telephone: 73 73 64 87

E-mail: wis@fantasea.com

WOSL

Telephone: 73 73 75 77

E-mail: wosl@fantasea.com

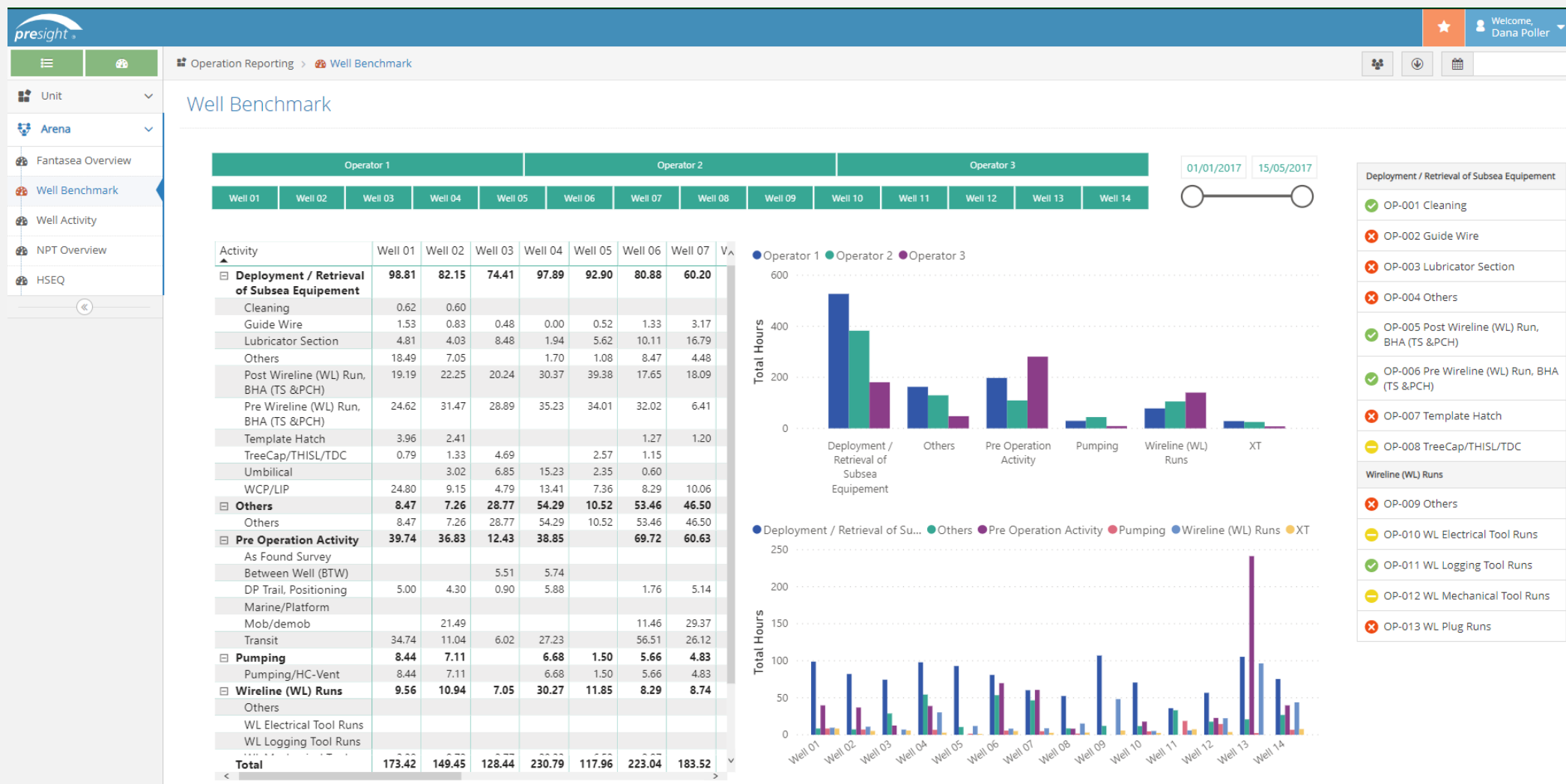
Position	Name	Operator	Field	Well	Date
Captain	Celine Rowley	Operator 1	Field 2	Well 01	Tuesday 14. January 2020
Chief Engineer	Myles Cobb	Operator 1	Field 2	Well 01	Tuesday 14. January 2020
Chief Officer	Lizzie O'Quinn	Operator 1	Field 2	Well 01	Tuesday 14. January 2020
Offshore Manager	Jaxson Stevenson	Operator 1	Field 2	Well 01	Tuesday 14. January 2020
Offshore Manager Night	Cain Holland	Operator 1	Field 2	Well 01	Tuesday 14. January 2020
WIS Day	Izaak Gamble	Operator 1	Field 2	Well 01	Tuesday 14. January 2020
WIS Night	Johnny Barnett	Operator 1	Field 2	Well 01	Tuesday 14. January 2020
WOSL	Ciara Cline	Operator 1	Field 2	Well 01	Tuesday 14. January 2020
Captain	Barry Charlton	Operator 1	Field 2	Well 01	Monday 13. January 2020
Chief Engineer	Izabela Valdez	Operator 1	Field 2	Well 01	Monday 13. January 2020
Chief Officer	Sukhmani Haines	Operator 1	Field 2	Well 01	Monday 13. January 2020
Offshore Manager	Mylee Brook	Operator 1	Field 2	Well 01	Monday 13. January 2020
Offshore Manager Night	Cain Holland	Operator 1	Field 2	Well 01	Monday 13. January 2020
WIS Day	Suhail Simmons	Operator 1	Field 2	Well 01	Monday 13. January 2020
WIS Night	Montell Meadows	Operator 1	Field 2	Well 01	Monday 13. January 2020
WOSL	Ciara Cline	Operator 1	Field 2	Well 01	Monday 13. January 2020
Captain	Celine Rowley	Operator 1	Field 2	Well 01	Sunday 12. January 2020
Chief Engineer	Myles Cobb	Operator 1	Field 2	Well 01	Sunday 12. January 2020
Chief Officer	Sukhmani Haines	Operator 1	Field 2	Well 01	Sunday 12. January 2020
Offshore Manager	Skylah Goodman	Operator 1	Field 2	Well 01	Sunday 12. January 2020
Offshore Manager Night	Clive Barrera	Operator 1	Field 2	Well 01	Sunday 12. January 2020
WIS Day	Suhail Simmons	Operator 1	Field 2	Well 01	Sunday 12. January 2020
WIS Night	Tracey Hardy	Operator 1	Field 2	Well 01	Sunday 12. January 2020
WOSL	Ciara Cline	Operator 1	Field 2	Well 01	Sunday 12. January 2020
Captain	Celine Rowley	Operator 1	Field 2	Well 01	Saturday 11. January 2020

Weather Conditions

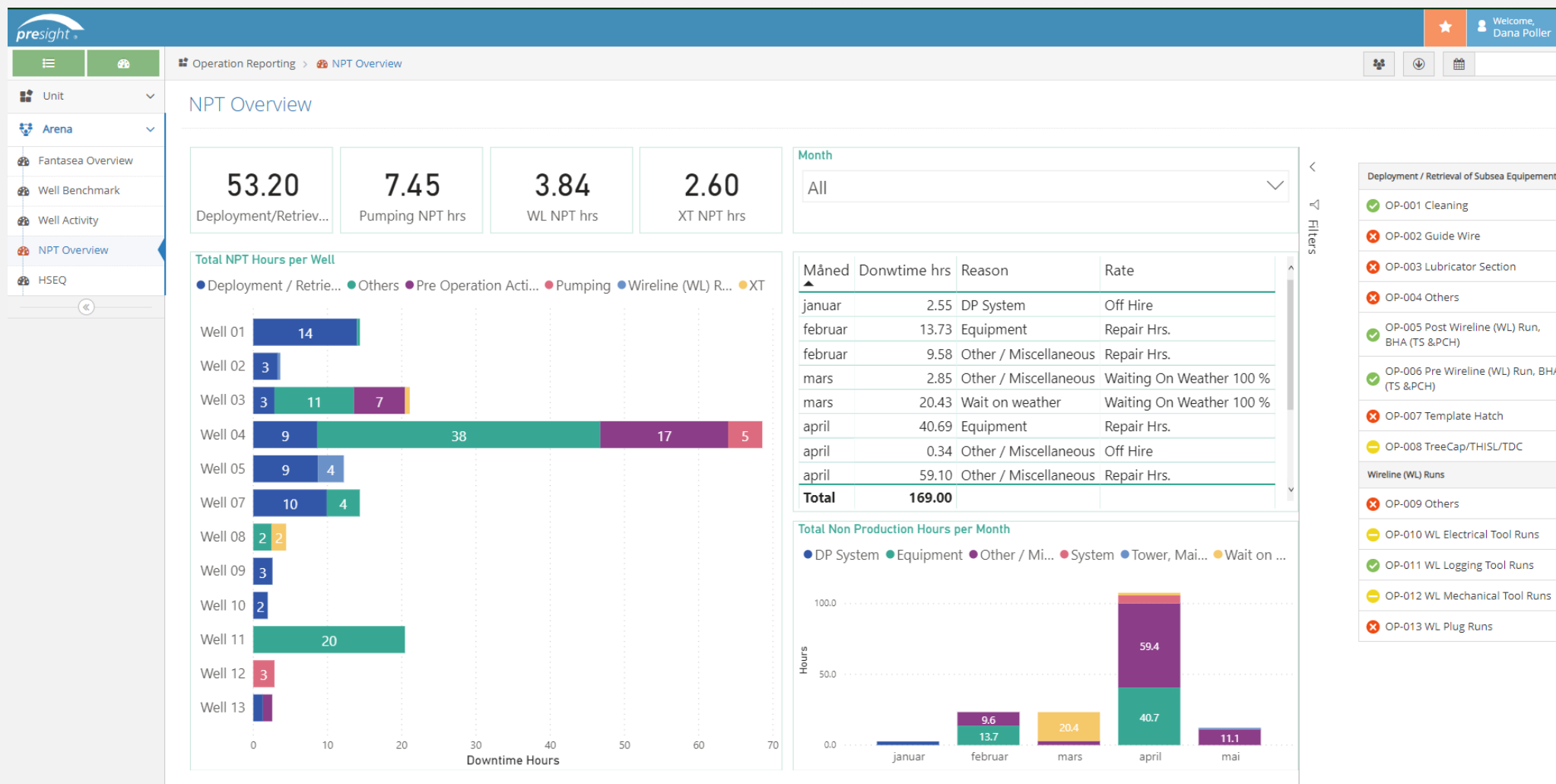
Demo - Screenshots

Presight OR – v4

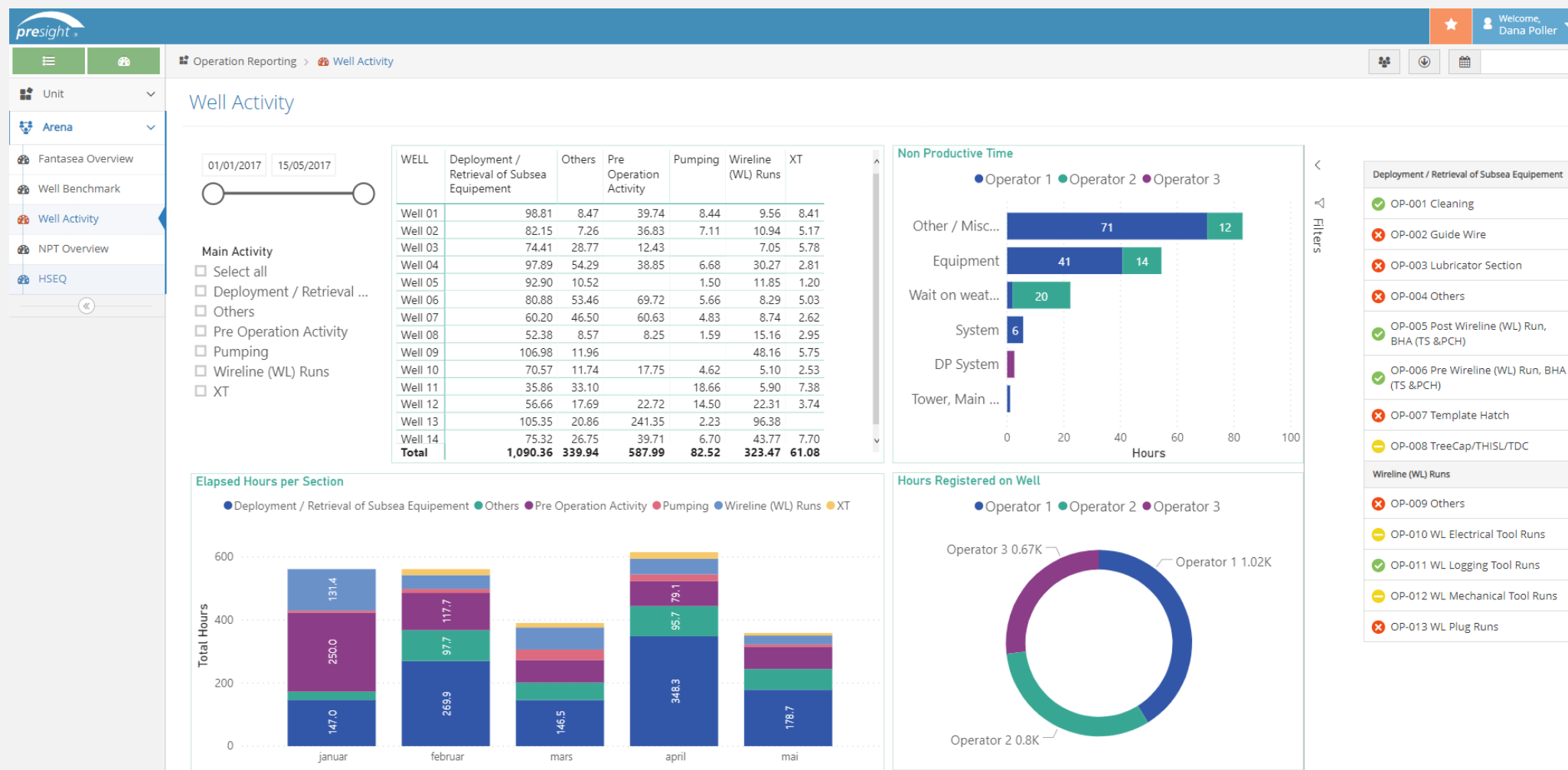
10



Demo - Screenshots



Demo - Screenshots



Agenda

- Lunch/Networking
- Welcome
- Digital solution for more efficient operation

Reporting made easy

Digital solution for safer operation – Presight Solutions

Picking up signals from the noise (Monitoring)

- Coffee Break/Networking
- Client Use Case
- Partners corner
 - Lloyds register
 - CGE
- Coffee Break/Networking
- Roadmap
- Summary/Q&A

➡ Version 5.0 in use

- Enhanced GUI
- Override Function

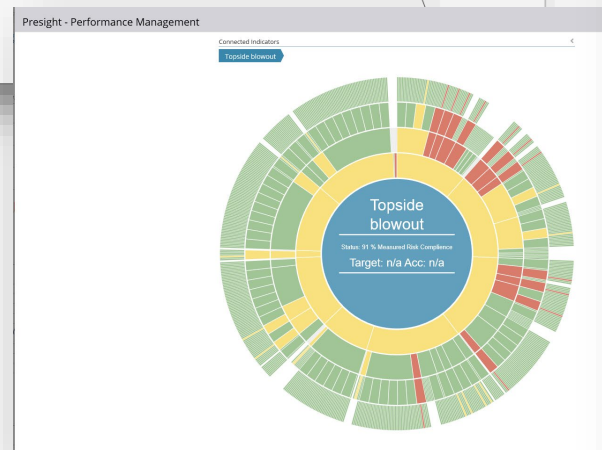
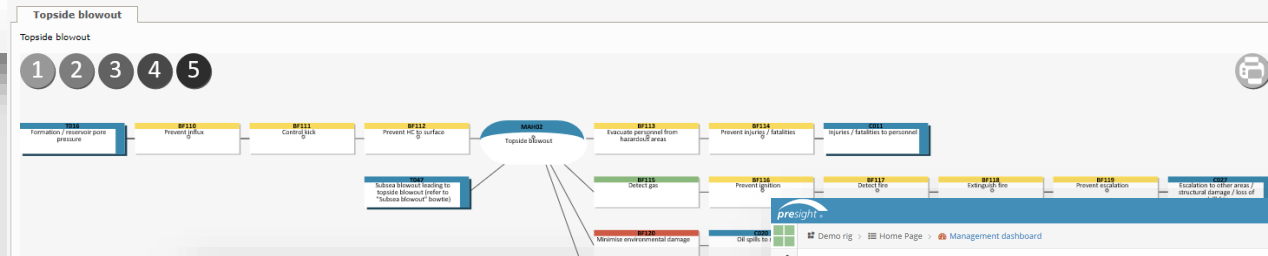
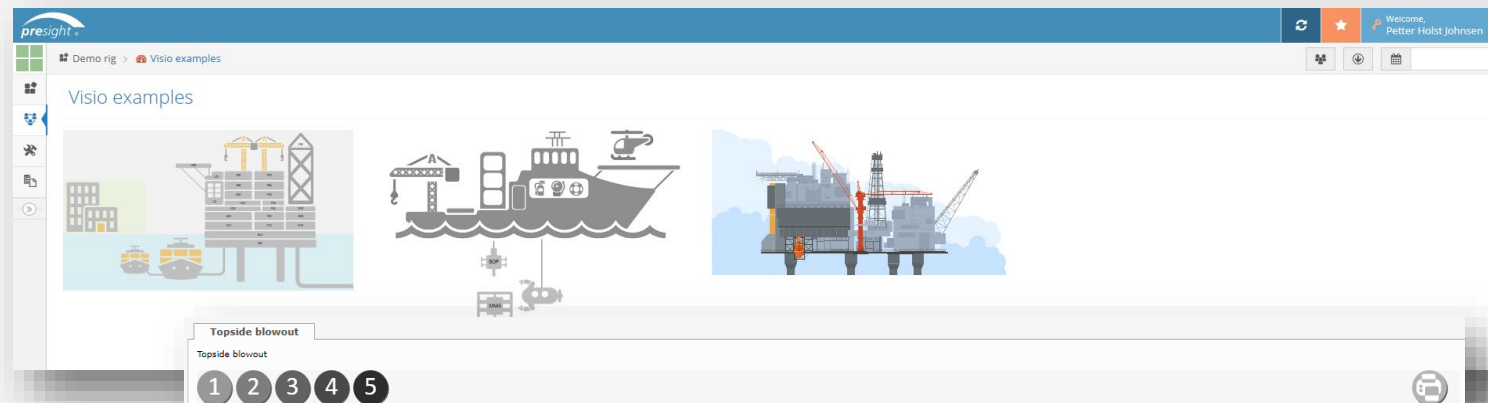
➡ Establishing Best Practice BM

- "Off the shelf" Solution
 - Less *demanding* on the client

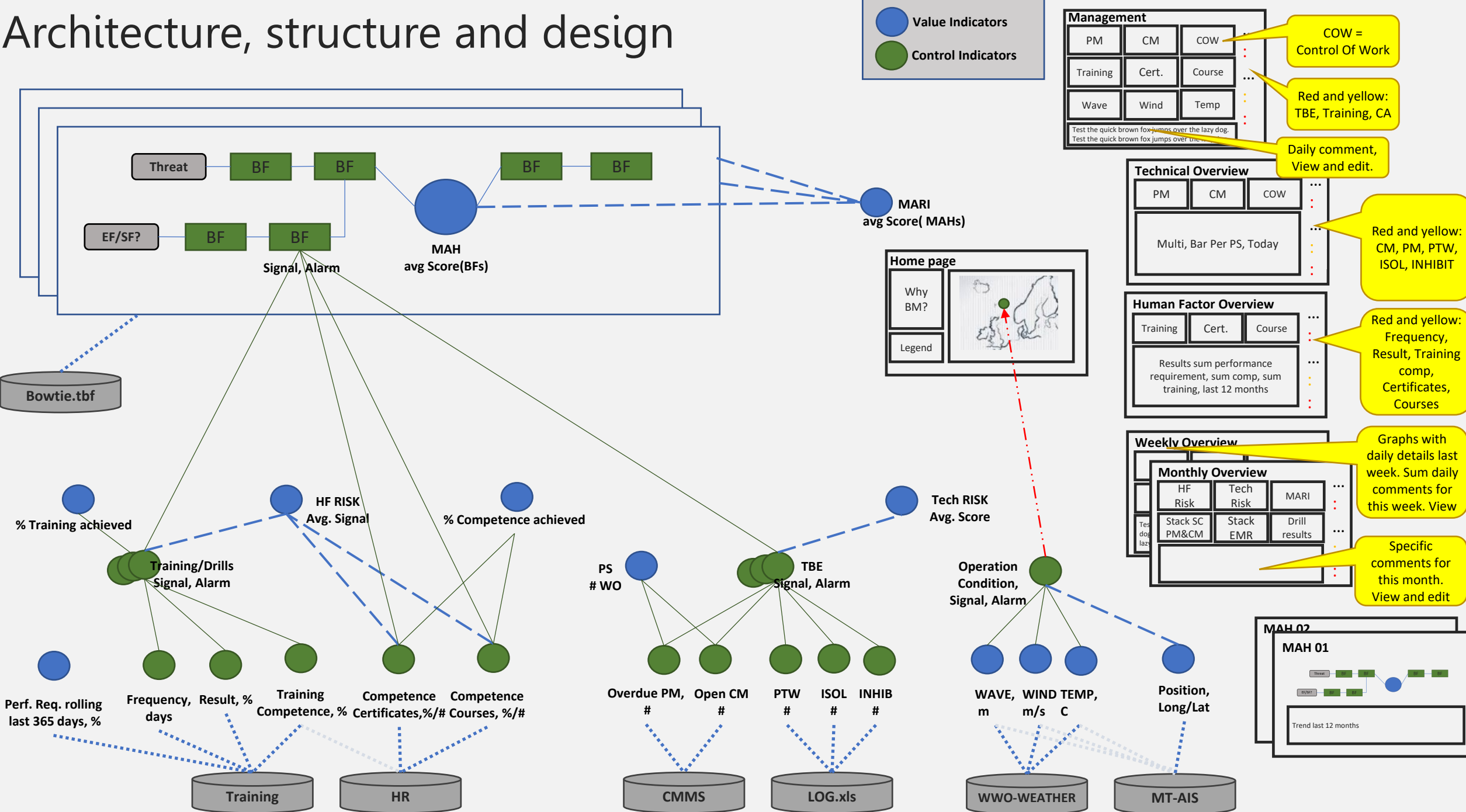
➡ Embedded Power BI

➡ Data Quality Management

➡ BowTieXP Adapter



Architecture, structure and design





- Monitoring data sources for discrepancies
- Visual aid for easy access to check validity of data
- Surveillance with notification
- Responsible person

- Most clients use BowTieXP for displaying their barriers towards MAH
- Adapters developed to ease the two-way integration of BowTieXP in Presight
- Easier to update and review bowties and swift alignment between Presight and BowTieXP
- Procurement of BowTieXP license is recommended

Agenda

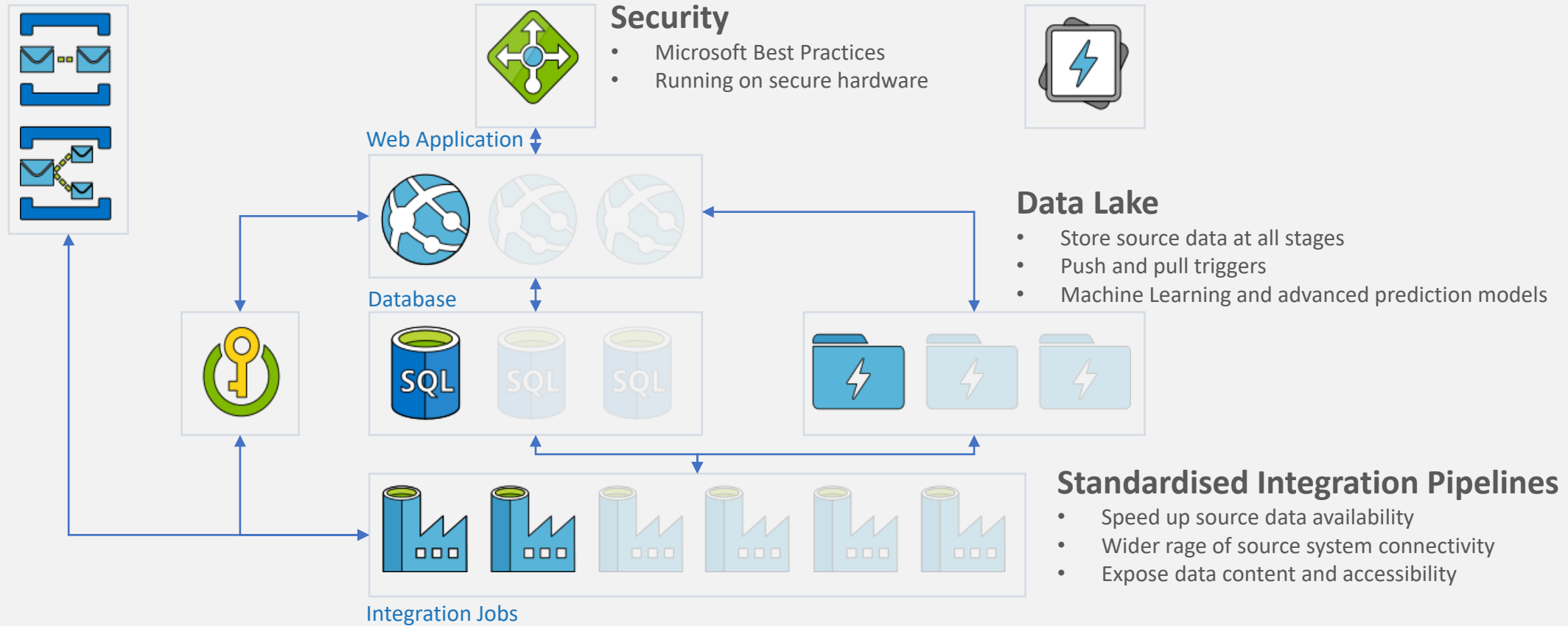
- Lunch/Networking
- Welcome
- Digital solution for more efficient operation
 - Reporting made easy
- Digital solution for safer operation
 - Picking up signals from the noise (Monitoring)
- Coffee Break/Networking
- Client Use Case
- Partners corner
 - Lloyds register
 - CGE
- Coffee Break/Networking

Roadmap - Presight Solutions

- Summary/Q&A

Webhooks

- Notifications to teams
- Triggers for other systems



■ Reporting Made Easy

- Safety observation card reporting module
- Experience Transfer module
- Shift Handovers
- Checklist

■ Picking up Signals from the Noise

- Barrier Monitoring (more inputs)
 - From more reporting (safety culture)
 - Verification activity incorporated
 - Assessor evaluation included
- Dynamic Threat Picture
 - Take usage of threat indicators in bow-tie